



HD*live* TECHNOLOGIES

YOUR VISION – NEW PERSPECTIVES

Having more information can help enrich clinician-patient communication and facilitate a more complete understanding of exam results. With Voluson's™ suite of HD*live*™ technologies, reveal a unique clinical perspective of fetal and female anatomy that brings unprecedented anatomical realism to surface, vascular, and internal structures.

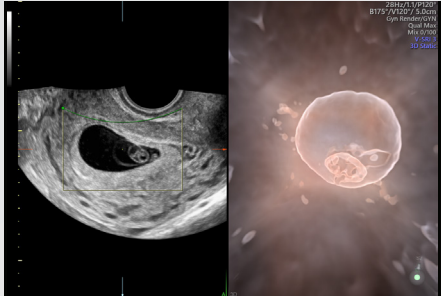
Powered by the Voluson's Radiance System Architecture, HD*live* utilizes a combination of advanced skin illuminating and shadowing techniques to expose possible hidden details for a deeper understanding of relational anatomy and developing structures.

BT19

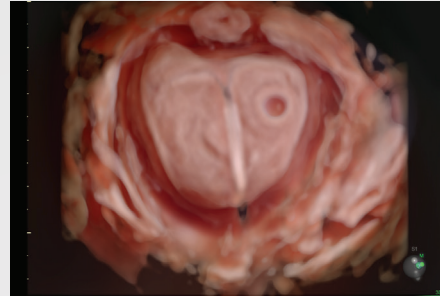


ILLUMINATING THE FINE DETAILS

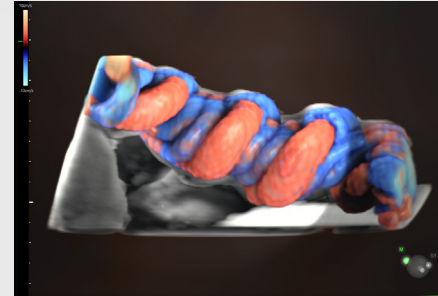
While conventional ultrasound rendering uses a fixed light source reflecting light off the skin surface, *HDlive* delivers customizable virtual light sources. Select light target area, direction, and intensity to highlight depth perception and internal structures.



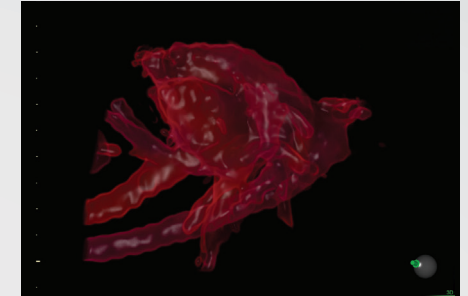
HDlive Silhouette – Dynamically apply transparency to rendered structures for a more thorough view of anatomy from a solid surface structure to developing internal anatomy.



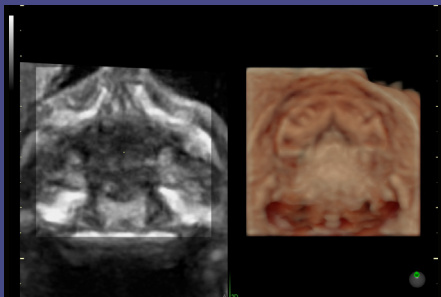
HDlive Studio – Illuminate fluid and anatomy with up to three independent light sources of variable intensity to focus on even the tiniest of structures.



HDlive Flow – Clearly display vascular structures and orientation with greater dimension and illumination.



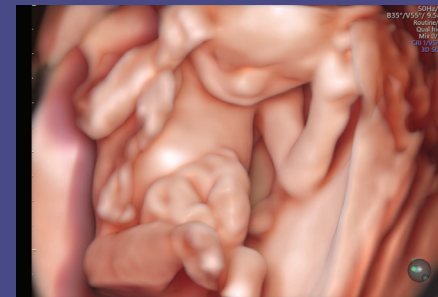
HDlive Flow Silhouette – Visualize blood vessels and fetal heart flow to provide greater insight transparently through vascular anatomy.



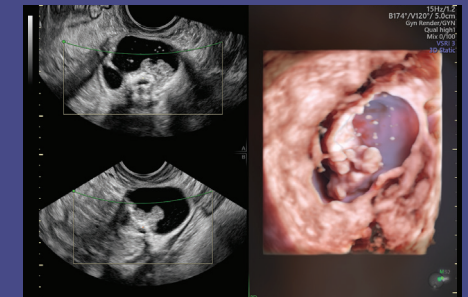
Alveolar ridge with *HDlive*



STIC acquisition highlighted with *HDlive* Flow for vessel detail



Gastroschisis rendered with *HDlive* Studio helps increase depth perception and anatomic realism



Ovarian mass with internal structures illuminated with *HDlive* Studio



© 2018 General Electric Company – All rights reserved.

GE Healthcare reserves the right to make changes in specifications and features shown herein, or discontinue the product described at any time without notice or obligation. Contact your GE Healthcare representative for the most current information. GE, the GE Monogram, Voluson, and *HDlive* are trademarks of General Electric Company. GE Healthcare, a division of General Electric Company. GE Medical Systems, Inc., doing business as GE Healthcare.

August 2018
JB59717XXn