



▶ Enabling Cardiac Imaging



# LOGIQ E10 Series

EMPOWERING YOU TO MAKE THE DIFFERENCE

## Efficient workflow and imaging for cardiac patients

### CLINICAL CHALLENGE

Lengthy exam times are a challenge in cardiac ultrasound imaging, especially for critically ill patients with multi-level disease. It can be time-consuming to get quality images and acquire all the metrics for a precise diagnosis. The result is inefficient workflow and high risk of sonographer injury.

### GE SOLUTION

The more efficient your procedures, the more lives you can touch every day. The LOGIQ™ E10 Series with cSound™ Architecture combines versatile XDclear™ probes and the cSound Imageformer to deliver exceptional image quality within fast scan times across a wide range of cardiac exams, even in challenging cases.



## Confident diagnosis

From pediatric to geriatric patients, the LOGIQ E10 Series empowers clinicians to obtain high quality images across a range of conditions, including structural anomalies, congestive heart failure, cardiomyopathy, and coronary artery disease.

**Auto-optimized images:** The cSound Imageformer continuously delivers images of incredible uniformity from near to far field. There's no need to adjust the focus – the information you need is there, instantly.

**E-Series and new XDclear probes:** The probes work in tandem with the cSound Imageformer to increase penetration power in all modes, including color and Doppler. Available TEE probe supports transesophageal imaging.

**Adaptive Contrast Enhancement (ACE):** Analyzes channel data to find the best data for the image, helping reduce the need for more complex studies.

## Comprehensive tools

The LOGIQ E10 Series provides robust tools to increase the speed and precision of diagnosis, guidance and treatment.

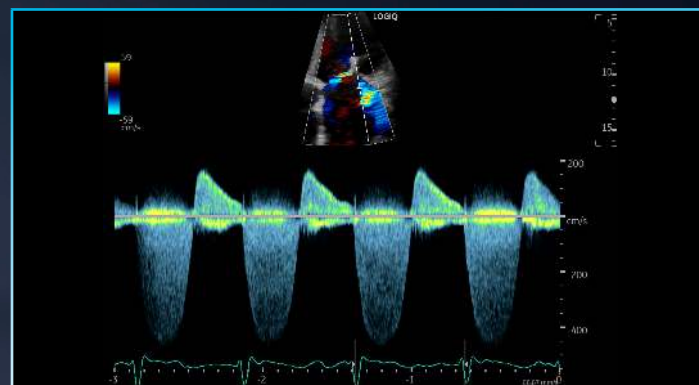
**Contrast agent imaging:** Contrast agent imaging with the LOGIQ E10 Series optimizes the balance between penetration and resolution for improved contrast sensitivity, such as visualizing the endocardial border when assessing LV function.

**Cardiac Strain:** Automates 2D speckle tracking to measure the deformation, or strain, of the myocardium in real-time to assist clinicians in:

- Early identification of underlying cardiac disease
- Managing patients on chemotherapy to avoid heart failure due to chemotoxicity
- Diagnosing and managing patients with cardiomyopathy

**Stress Testing:** An integrated stress echo package, with the ability to perform image acquisition, review, image optimization, and wall segment scoring and reporting for a complete, efficient stress echo examination.

**TVI/TVD:** Tissue Velocity Imaging (TVI) qualitatively color-codes the velocities in tissue. Tissue Velocity Doppler (TVD) quantitatively calculates the velocities in tissue.



CW Doppler, M5Sc-D

## Concise workflow

The LOGIQ E10 Series can help shorten exam times, to help you achieve new levels of workflow efficiency in cardiac ultrasound.

**Automated Ejection Fraction:** A semi-automatic tool to measure global ejection fraction.

**Raw Data:** Now captures twice the data and helps shorten study times by enabling image processing and quantification after the exam.

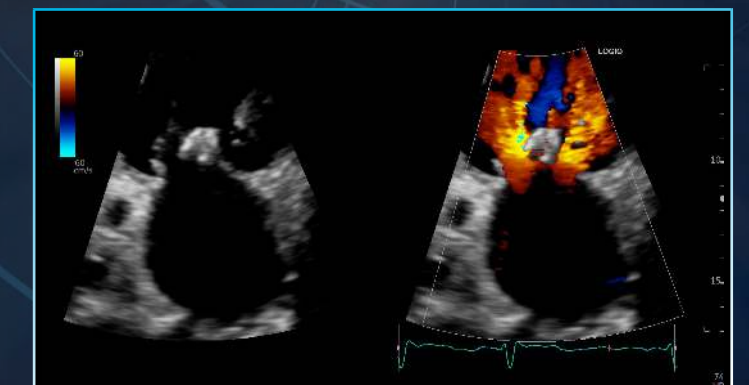
**Compare Assistant:** Enables clinicians to view side-by-side clips of wall motion from current and past studies in order to monitor disease progression right on the system. No need to move to a workstation.

**DICOM® SR/linked image:** Structured reporting formats enable automatic population of measurement values and link directly to ultrasound images to add efficiency and precision to workflow.

**Exceptional mobility:** Systems easily fit into crowded suites. Power Assistant battery eliminates the need for re-boot, and you can even scan on battery power. On-board storage ensures supplies are at hand.



Transesophageal echocardiogram bubbles valve replacement, 6Tc-RS



Dual simultaneous color flow jets, M5Sc-D



## > Smart investment

GE Healthcare accelerates innovation with the LOGIQ E10 Series – making it the smart choice for now and in the future. The systems are available with a full suite of robust features and scalable options.

**A to A digital platform:** Stay at the forefront of clinical imaging with our A to A digital platform, specifically engineered so you can add next-generation capabilities in the years ahead.

**Familiar user interface:** The new LOGIQ E10 Series offers greater functionality while maintaining the ease of operation and satisfying user experience that has become a hallmark of LOGIQ interface design.

**SonoDefense:** GE Healthcare's multi-layer approach to cybersecurity helps keep the systems safe and functional in the face of cyberthreats and helps protect patient data from unauthorized access.

**Digital support:** Wide choice of efficiency tools to help users, administrators, and operations staff improve productivity, including remote preset management, performance analytics, software/security updates, live clinical training, and advanced system diagnostics.



### Imagination at work

Product may not be available in all countries and regions. Full product technical specifications are available upon request. Contact a GE Healthcare Representative for more information. Please visit [www.gehealthcare.com/promotional-locations](http://www.gehealthcare.com/promotional-locations).

Data subject to change.

© 2020 General Electric Company – All rights reserved.

GE, the GE Monogram, imagination at work, LOGIQ, XDclear, and cSound are trademarks of General Electric Company. DICOM is a trademark of National Electrical Manufacturers Association.

Reproduction in any form is forbidden without prior written permission from GE. Nothing in this material should be used to diagnose or treat any disease or condition. Readers must consult a healthcare professional.

To determine whether individual features are standard or optional, consult with your GE Healthcare sales representative.

February 2020 JB74153XX



Powered By  
Edison