



Versana Premier™ Black

Care with Confidence



INTRODUCING Versana Premier Black

The Versana Premier Black ultrasound system can help you deliver high-quality, personalized care, patient after patient, day after busy day. This innovative system is well suited for general practice clinics, physical check-up centers, community health clinics, and other facilities offering basic medical care. It is versatile to cover abdominal, OB/GYN, cardiac, urology, vascular and musculoskeletal exams.

A wide variety of probes and clinical features let you provide quick and comfortable exams, see clearly, and confidently diagnose a broad range of conditions.

POWERFUL. VERSATILE. PRODUCTIVE.
World-class ultrasound designed for peace of mind.

-  World-class imaging
-  Smart clinical features
-  Intelligent automated productivity tools
-  Clinical and product education*
-  Expert service and technical support
-  Flexible financing options
-  Access to a network of Versana users

Versana Premier Black

is part of the Versana ultrasound family: complete solutions that help empower care without compromise, balancing capability, affordability, and reliability.

* Local educational offerings and financing options may vary according to regions.
Please check with your local GE Healthcare representative.





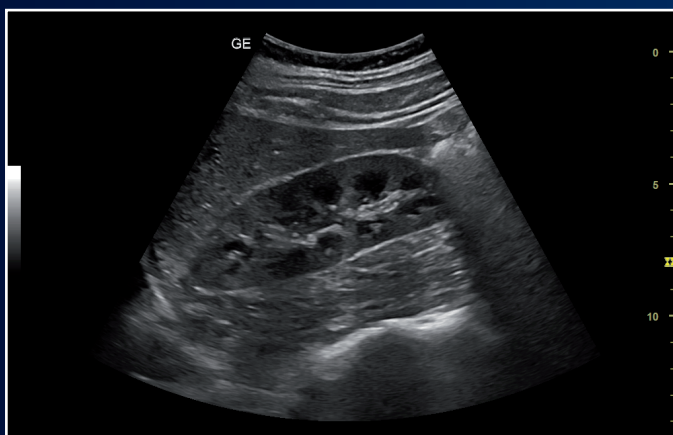
A partner you can trust

Take your practice to new levels of excellence

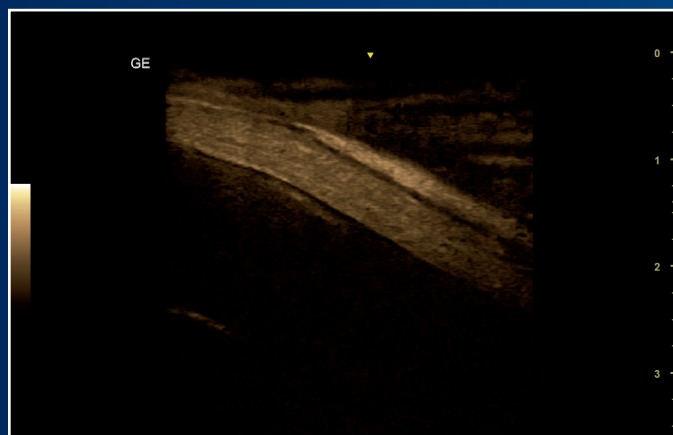


World-class imaging technology

Versana Premier Black delivers outstanding imaging power and clarity to boost diagnostic confidence. It helps you see clearly, differentiate between tissues, and delineate structure boundaries. You'll enjoy proven functionalities found on most advanced GE systems.



CrossXBeam™ and SRI-HD to define structure borders clearly.



Sensitive B-Flow™ and B-Flow color imaging to analyze blood flow, diagnose vessel-wall irregularities and stenosis, and more.

Comprehensive service and support for peace of mind

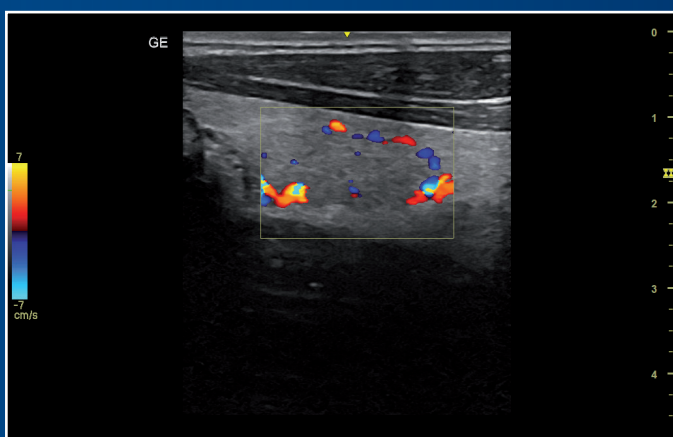
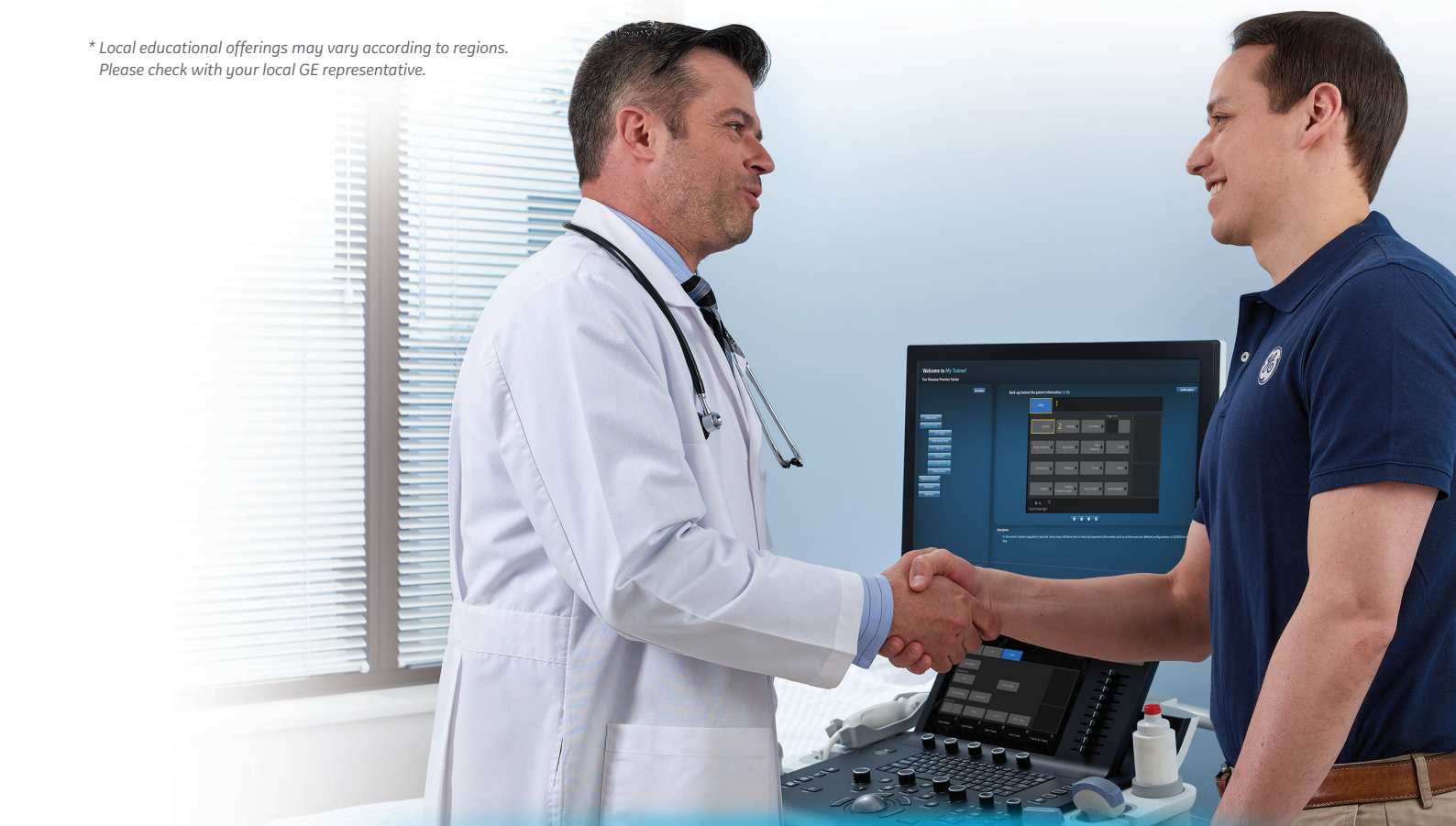
GE delivers flexible, worry-free, multi-year coverage. It's your assurance of long life, high uptime, maximum patient volume, and strong return on investment.

- Expert service engineers always close by
- Simple maintenance; easy troubleshooting and repair
- InSite™ service technology* for fast remote diagnostics and repairs

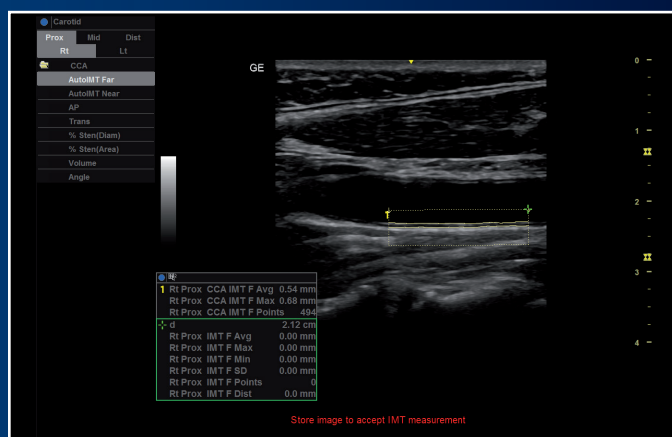
* Local educational offerings may vary according to regions. Please check with your local GE representative.

Decades of GE Healthcare heritage at your service

Invest in Versana Premier Black and benefit from vast GE ultrasound expertise. It's designed with you, your practice, and your patients in mind to meet your clinical, workflow and connectivity needs.



Sensitive color Doppler to examine thyroid vasculature and blood flow in vessels.



Auto IMT automatically measures the thickness of the Intima Media on the far and near vessel walls.

A complete solution

Advanced capability, clinical education, and financing to fit your budget

Versatile system, simple to use

Multiple exam protocols and applications help you diagnose a wide spectrum of patient conditions. Intuitive automated tools streamline workflow. The system boots up quickly and operates quietly. It is compact to fit small spaces and easy to maneuver between rooms.



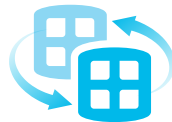
Scan Assistant lets you create standardized exam protocols, reducing fatigue and maximizing exam consistency



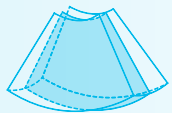
Overlay **voice comments** on images for playback when reviewing exams



Whizz dynamic image tuning continuously optimizes the image as you scan, even as you move from one organ or area to another



Compare current and prior exams side-by-side with the **Follow-Up Tool**



Use **3D volume** imaging for rich anatomical views



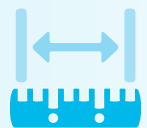
Use **battery power** to move the system from room to room without powering down



Capture standard pre- and post-stress cardiac views with **Stress Echo**



Network options use the cloud¹ to share images with consultation²



Take **automated measurements** of bladder volume, cysts or masses, IMT thickness, fetal characteristics and more

Flexible financing choices to enhance return on investment

Financing plans³ including monthly payments help you meet your financial goals and grow your practice.

ERGONOMIC FEATURES FOR CLINICIAN AND PATIENT COMFORT†



Height-adjustable console



Large full HD display

Touch panel

Integrated battery



Sharpen your skills and stay ahead of the curve

- Scan Coach: 3D animation, anatomic illustrations and reference images
- My Trainer: on-board help with system care, setup and operation
- Web-based product and clinical tutorials
- Local face-to-face training and remote application support*

† Optional features which may vary from country to country.

* Local educational offerings and financing options may vary according to regions. Please check with your local GE Healthcare representative.



An opportunity for growth

Ultrasound to serve you well today and set your course for the future

Experience the strength of the GE Healthcare family

Your support team is fully trained & GE Healthcare qualified, deeply experienced, and close by.

- Expert support during and after purchase
- In-depth product instruction
- Remote or on-site technical, clinical and network support

Customized solutions and path to growth

Help your practice grow with Versana Premier Black. You can select a basic package, with the option to add more probes and software. Or let GE experts help select another system to suit your needs.

Versana Club: Learn. Network. Share.

The Versana Club gives you access to member resources that can help expand your ultrasound knowledge and improve your practice. It's a place to share images with your peers from around the world.

You'll also enjoy:

- Educational offerings
- Web-based video tutorials
- Information on Versana family service solutions and products
- Up-to-date content on ultrasound and patient care
- Notices of regional ultrasound events and other news
- Access to the broader family of GE Healthcare ultrasound user clubs



VERSANA PREMIER BLACK: CARE WITH CONFIDENCE *Powerful. Versatile. Productive. World-class ultrasound designed for peace of mind.*

Products mentioned in this material may be subject to government regulation and may not be available in all countries. Please check with your local Sales Representative. Shipment and the effective sale in certain countries can only occur if the product is approved. Final product configuration and features may differ from the ones represented here and may not be available in every country. Check with your local GE Healthcare representative for details.

1. Requires internet connection; may not be available in all countries.
2. Image sharing to mobile devices via Bluetooth available in some countries.
3. Financing options vary from country to country. Please check with your local GE representative.

Imagination at work

© 2019 General Electric Company - All rights reserved.

GE Healthcare reserves the right to make changes in specifications and features shown herein, or discontinue the product described at any time without notice or obligation. Contact your GE Healthcare representative for the most current information. GE, the GE Monogram, Versana Premier, InSite, CrossXBeam and B-Flow are trademarks of General Electric Company. Versana Premier Black is a configuration of the Versana Premier. GE Healthcare, a division of General Electric Company. GE Medical Systems, Inc., doing business as GE Healthcare.

December 2019
JB59804XX

