

LOGIQ S7 XDclear Urology Imaging

Imaging quality and speed you can rely on

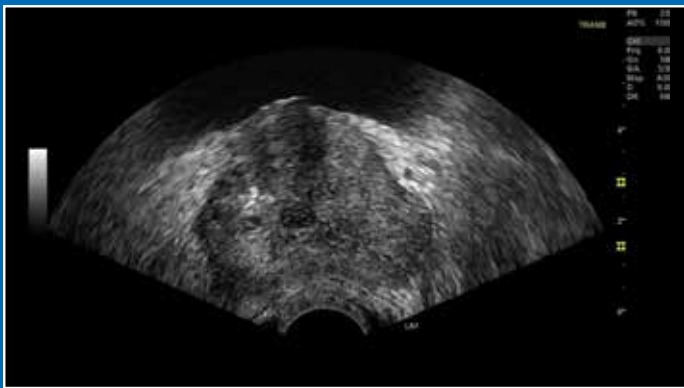
Clinical Challenge

It can be challenging to get ultrasound images of sufficient quality to visualize lesions in prostate, bladder and kidneys, and to determine which ones are the likeliest candidates for biopsy.

GE Solution

The LOGIQ™ S7 XDclear™ system provides the high quality images, workflow efficiency, and specialized tools to enable confident and efficient prostate and urology exams.





Prostate, BE9CS-D



Testes, L3-12-D

Sensational Performance

Using GE's premier probe and platform technology, the system optimizes image quality across virtually all patient body types.

Choice of high performance probes – The system offers both E-Series and XDclear probes, GE's highest performing probes, including:

- C1-5-D, C1-6-D – Broad spectrum convex
- 9L-D – Broad spectrum linear
- L3-12-D – Broad spectrum linear
- ML6-15-D – Broad spectrum linear matrix array
- IC5-9-D – Standard endocavitary
- RIC5-9-D – 3D/4D endocavitary
- BE9CS-D – Biplane endocavitary

Simultaneous Display – Designed as part of a dedicated urology user interface.

B-Flow™ Imaging – Enables direct, real-time visualization of blood flow echoes to assess vascularization.

3D/4D Imaging – Easy-to-use convex and micro-convex probes enable rapid volume sweeps for lesion detection.

Smart Design

The LOGIQ S7 XDclear system is designed to enhance productivity and ease in prostate and urology exams.

High-Res widescreen display – Configurable 23-inch image display enables simultaneous display of biplane and endfire images.

10.1-inch touch panel – Controls are easy to see and manipulate. Smart keys and backlit controls further enhance performance and procedural speed.

GE Raw Data – Helps shorten exam times by enabling users to quickly acquire data and apply a wide variety of image processing after the exam.

Compare Assistant – View a prior study – ultrasound, mammography, CT or MR – and current images together in real time via a split screen on the monitor.

Scan Assistant – Automated scanning program helps decrease keystrokes, shorten exam times, and increase exam consistency.

Image-guided biopsy – The system is compatible with CIVCO needle guidance systems.

Multi-modality Query Retrieve – Saves time by enabling one-click access to previous DICOM® exams, including MRI dataset, for side-by-side comparison with the live ultrasound image.

Specialized Capabilities

Strain Elastography – A non-invasive, diagnostic technique performed in correlation with conventional B-mode ultrasound, Strain Elastography measures the elasticity of tissues to help clinicians differentiate benign from malignant lesions.

Contrast Enhanced Imaging (CEUS) – Provides a clear picture of tissue vascularity and pattern of focal regions.

Imagination at work

www.gehealthcare.com. Product may not be available in all countries and regions. Contact a GE Healthcare Representative for more information. Data subject to change.

© 2016 General Electric Company.

GE, the GE Monogram, imagination at work, LOGIQ, XDclear and B-Flow are trademarks of General Electric Company.

DICOM is a registered trademark of the National Electrical Manufacturers Association.

Reproduction in any form is forbidden without prior written permission from GE. Nothing in this material should be used to diagnose or treat any disease or condition. Readers must consult a healthcare professional.



GERMANY
 GE Healthcare GmbH
 Beethovenstr. 239
 42655 Solingen
 T +49 212-28 02-0
 F +49 212-28 02-28
www.gehealthcare.com

UNITED KINGDOM
 GE Healthcare
 Pollards Wood
 Nightingale Lane
 Chalfont St Giles
 Buckinghamshire, HP8 4SP
 T +44 1494 544000

February 2016
 JB37510XAa
 300-16-U009E