

GE Healthcare

LOGIQ S7 XDclear

Amazing Versatility



XDclear family



NEXT GENERATION DESIGN WITH XDCLEAR IMAGING

From the start, the LOGIQ™ S7 has been designed for the needs of shared service environments. Now, its versatility is further enhanced with XDClear™ technology and a next-generation design that take performance to a new level.

Multiple applications. Different users. Variety of challenges. The LOGIQ S7 XDClear easily handles it, delivering the high quality images, ease of use, and specialized capabilities that busy clinicians need.

From its versatility to its budget-friendly price, the LOGIQ S7 XDClear is designed for practices with high expectations for both performance and value.

SENSATIONAL PERFORMANCE

The LOGIQ S7 XDclear harnesses GE's premier probe and platform technology to optimize image quality across virtually all patient body types – with speed and consistency.

- **S-Agile architecture** – Enables images of uniform excellence across multiple body types with minimal keystrokes
- **Expanded range of probes** – You now get an even wider selection with both E-Series and XDclear probes, GE's highest performing probes. New probes include:
 - C1-6-D for abdominal exams
 - C3-10-D for pediatric and neonatal imaging
 - S2-5-D for cardiac and vascular imaging
- **Image optimization tools** – Automated tools help enhance image quality such as increased contrast resolution and improved border definition
- **Auto TGC** – Automatically optimizes image brightness and contrast, enabling excellent image quality while streamlining procedures

SMART DESIGN

Redesigned from top to bottom, the LOGIQ S7 XDclear supports productivity and ease in workflow.

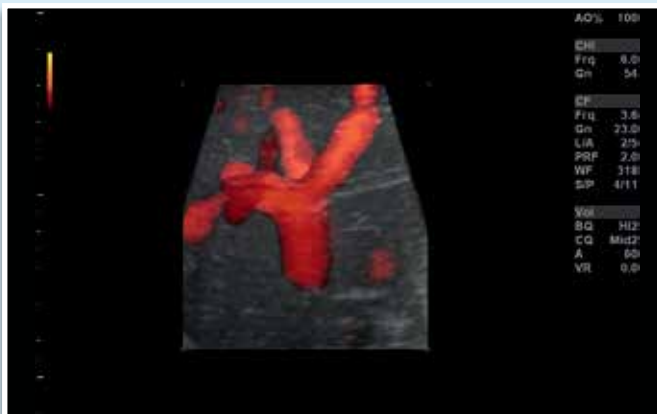
- **High-Res widescreen display** – High contrast, configurable 23" LCD monitor with LED backlit display mounted on an articulating arm allows user to arrange images and data to meet their needs
- **10.1-inch touch panel** – With a large touch panel, controls are easy to see and manipulate. Smart keys and backlit controls further enhance performance and procedural speed
- **Engineered for cleanability** – The near-seamless exterior has fewer gaps, making the system easy to clean
- **Enhanced portability** – Small and light-weight, the system easily navigates crowded exam rooms. Power Assist battery backup, wireless connectivity and Bluetooth® printing add to the mobility
- **Compare Assistant** – View a prior study – ultrasound, mammography, CT or MR – and current images together in real time via a split screen on the monitor
- **GE Raw Data** – Helps shorten exam times by enabling users to quickly acquire data and then apply a wide variety of image processing after the exam

SPECIALIZED CAPABILITIES

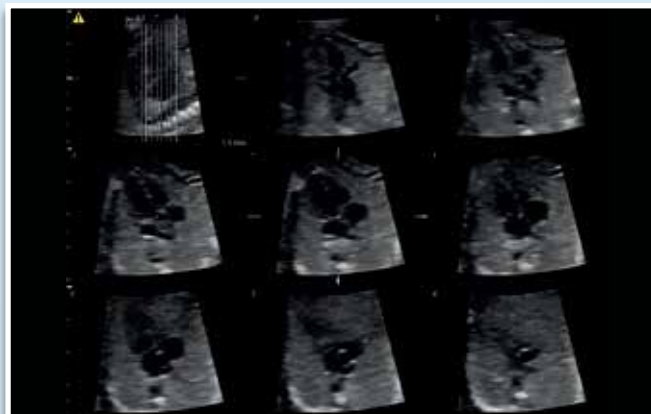
Well-suited for shared services, the system's versatility can be extended with a wide range of clinical packages, including B-Flow™, Elastography, Vascular Quantification, B-Steer+, Volume Imaging, and Multi-Modality Imaging Display. Among the new tools available on LOGIQ S7 XDclear:

- **Fetal assessment tools** – Advanced STIC (Spatio-Temporal Image Correlation) helps provide a high quality, comprehensive fetal echo examination. Advanced Volume Contrast Imaging (VCI) and OmniView helps improve contrast resolution and visualization of rendered anatomy with clarity in any image plane
- **Contrast Enhanced Imaging (CEUS) now expanded** – Provides a clear picture of tissue perfusion and lesion vascularity by optimizing the balance between penetration and resolution
- **Image exchange via smartphone** – The ability to send non-diagnostic images via smartphone and email is a powerful way to enhance both patient and clinician satisfaction

AMAZING VERSATILITY



3D Vascular image using RAB4-8-D



STIC Tomographic Ultrasound Image of a fetal heart using the RAB4-8-D probe



Trans-esophageal image of the Mitral Valve using the 6Tc-RS probe



Look behind the amazing versatility of this system and you'll find amazing educational, service, and financial support as well:

- Classroom training, online tutorials, workshops and ongoing opportunities for professional development
- Membership in the LOGIQ Club, our global users community
- One-year service warranty, and available remote service connectivity
- Probe protection and financing to help meet your budget goals

To learn how LOGIQ S7 XDclear ultrasound can help you meet the clinical and workflow demands of shared service ultrasound imaging, talk with your GE Healthcare representative.



Imagination at work

www.gehealthcare.com. Product may not be available in all countries and regions. Contact a GE Healthcare Representative for more information.

Data subject to change.

© 2016 General Electric Company.

GE, the GE Monogram, imagination at work, LOGIQ, XDclear and B-Flow are trademarks of General Electric Company.

Bluetooth® is a trademark of Bluetooth SIG, Inc.

Reproduction in any form is forbidden without prior written permission from GE. Nothing in this material should be used to diagnose or treat any disease or condition. Readers must consult a healthcare professional.

GERMANY

GE Healthcare GmbH
Beethovenstr. 239
42655 Solingen
T +49 212-28 02-0
F +49 212-28 02-28
www.gehealthcare.com

UNITED KINGDOM

GE Healthcare
Pollards Wood
Nightingale Lane
Chalfont St Giles
Buckinghamshire, HP8 4SP
T +44 1494 544000

February 2016
JB37509XAa
300-16-U004E