



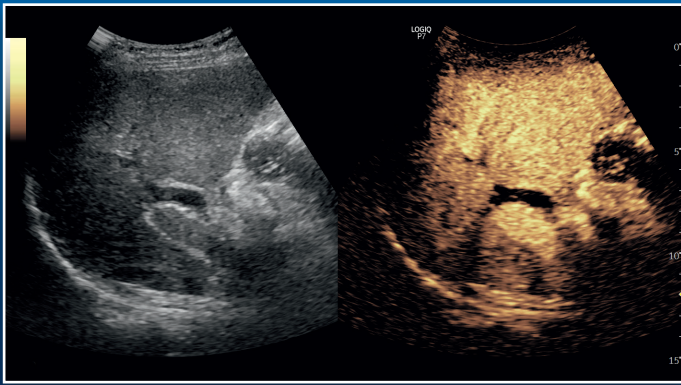
# LOGIQ P9 and LOGIQ P7

Make it easy. Make it your own.

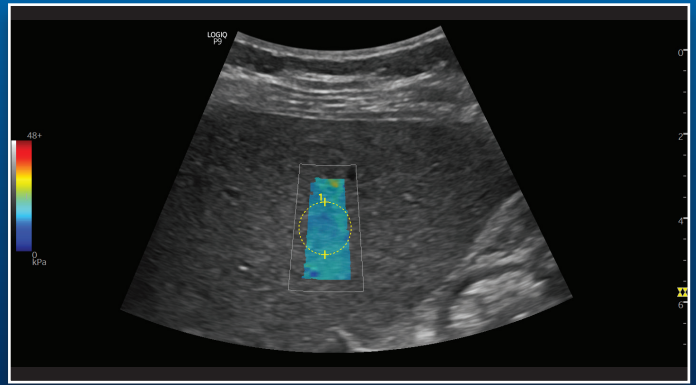


## LIVER IMAGING

Liver disease affects millions of people worldwide. Clinicians need a cost-effective, highly reproducible way to help them identify high-risk patients, track disease progression quantifiably, and make informed decisions to optimize treatment efficacy and cost.



Liver CEUS, 4C-RS



Liver Shear Wave Elastography, C1-5-RS



### Diagnosis & Staging

- CEUS
- 2D Shear Wave Elastography<sup>1</sup>
- Volume Navigation Import



### Treatment Planning & Guidance

- Ultrasound Specialty Probes
- CEUS
- Volume Navigation Import
- B-Steer+ Needle Visualization



### Monitoring

- CEUS
- 2D Shear Wave Elastography<sup>1</sup>



## Contrast imaging

Optimizes the balance between penetration and resolution for improved contrast sensitivity that enhances clinicians' ability to assess tumor blood flow and characterize focal liver lesions.

## 2D Shear Wave Elastography<sup>1</sup>

Provides a quantitative estimate of tissue elasticity displayed in color-coded elastograms to assist in managing patients with chronic liver disease. With the LOGIQ P9 system, you can combine ultrasound imaging and 2D Shear Wave Elastography in a single exam. Semi-automatic measurements provide quick, quantifiable information.

## Volume Navigation Import

Merges real-time ultrasound with previously acquired CT and MR datasets, so clinicians can directly compare anatomy to assist in the diagnosis, staging, and treatment planning for liver disease.

## Enhanced B-Steer+

This needle visualization software helps improve the speed and accuracy of image guided procedures.

## Improving liver care

The LOGIQ P9 and P7 systems can be a valuable tool in helping clinicians manage patients with liver cancer and chronic liver disease with features optimized for diagnosis, staging, as well as treatment planning, guidance, and monitoring.

1. 2D Shear Wave is just available on the LOGIQ P9.

The LOGIQ P9 and P7 have been designed for compatibility with most commercially available ultrasound contrast agents. Availability of these agents is subject to government regulation and approval. Contrast imaging should be performed within the approved indications for use of the contrast agent used in the exam.

## Imagination at work

Product may not be available in all countries and regions. Full product technical specification is available upon request. Contact a GE Healthcare Representative for more information. Please visit [www.gehealthcare.com/promotional-locations](http://www.gehealthcare.com/promotional-locations). Data subject to change.

© 2018 General Electric Company.

GE, the GE Monogram, imagination at work and LOGIQ are trademarks of General Electric Company. All other third-party trademarks are the property of their respective owners.

Reproduction in any form is forbidden without prior written permission from GE. Nothing in this material should be used to diagnose or treat any disease or condition. Readers must consult a healthcare professional.

September 2018 JB60744XXa 300-19-U005E

