



# LOGIQ P9 and LOGIQ P7

Make it easy. Make it your own.

This highly portable and adaptable ultrasound system can help your department enhance efficiency. The LOGIQ™ P9 and LOGIQ P7 help users manage busy schedules and complex cases with ease.

**Simple, smart design** – 80% fewer physical buttons and hard controls<sup>1</sup>, 21.5-inch monitor, 10.4-inch touch panel in a compact, ergonomic design.

**My Page** – Personalized digital user interface enables customization of workflow preferences and use case presets. Simply log in, select the appropriate exam type, and begin scanning.

**Personalized keys** – Includes five digital user-defined keys, five physical user-defined keys, and configurable mode keys.

**Touch Control** – Manipulate images on the touch panel with your fingertips, even when gloved. Zoom, magnify, freeze – all with a touch, similar to using a tablet or smartphone. Excellent cleanability as well.

**Power Assistant with Extended Battery** – Enables up to one hour of offline scanning.

**Automated tools** – Auto TGC, Auto IMT, AutoEF, Measure Assistant, Compare Assistant, and Scan Assistant.

**Remote Control App** – Enables operation from an Android™ device with the LOGIQ App.

**Photo Assistant App** – A picture is worth a thousand words in reporting. Acquire and send photos of relevant anatomy – right from an Android tablet or phone – to provide valuable context for documentation and comparison after a procedure.

**Probe Light** – Facilitates quick, easy changing of probes in dark rooms.

**My Trainer** – Self-training modules – available on-board, online or via an app – help accelerate operational confidence.

**LOGIQ Club** – Online educational resources, including videos, to help optimize system utilization.



# Now even more ADVANCED



## Personalized

Customizable workflow features deliver high efficiency your way



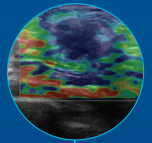
## Practical

Advanced automation and ergonomics enable fast exams and reliable results



## Patient-centric

Quality images and advanced tools support diagnostic confidence across a wide range of patient exams



**Touch Control** – Easily manipulate images on touch panel, even wearing gloves



**HD Color** – Sensitivity for visualizing small vessels and slow flow



**Remote Control App** – Operate the system from an Android phone or tablet



**Photo Assistant App** – Combine anatomical photos and images in same report



**2D Shear Wave Elastography<sup>3</sup>** – Quantitative estimate of tissue elasticity displayed in color-coded elastograms



**SonoDefense** – Powerful data security features to help guard against costly breaches

1. Internal GE engineering study using standardized protocols for an abdominal exam compared with prior version GE LOGIQ P6 ultrasound system.
2. Optional physical keyboard available for purchase.
3. 2D Shear Wave Elastography is just available on the LOGIQ P9.

## Imagination at work

Product may not be available in all countries and regions. Full product technical specification is available upon request. Contact a GE Healthcare Representative for more information. Please visit [www.gehealthcare.com/promotional-locations](http://www.gehealthcare.com/promotional-locations). Data subject to change.

© 2018 General Electric Company.

GE, the GE Monogram, imagination at work and LOGIQ are trademarks of General Electric Company. Android is a registered trademark of Google, Inc. All other third-party trademarks are the property of their respective owners.

Reproduction in any form is forbidden without prior written permission from GE. Nothing in this material should be used to diagnose or treat any disease or condition. Readers must consult a healthcare professional.

September 2018 JB60488XXa 300-19-U008E

