



## About GE Healthcare

GE Healthcare provides transformational medical technologies and services to meet the demand for increased access, enhanced quality and more affordable healthcare around the world.

GE (NYSE: GE) works on things that matter - great people and technologies taking on tough challenges. From medical imaging, software & IT, patient monitoring and diagnostics to drug discovery, biopharmaceutical manufacturing technologies and performance improvement solutions, GE Healthcare helps medical professionals deliver great healthcare to their patients.

Product may not be available in all countries and regions.  
Full product technical specification is available upon request.  
Contact a GE Healthcare Representative for more information.  
Please visit [www.gehealthcare.com/promotional-locations](http://www.gehealthcare.com/promotional-locations).

#thefutureofxray

Data subject to change.  
© 2018 General Electric Company. JB56213XX  
GE, the GE Monogram, imagination at work, Helix are trademarks of General Electric Company.

[gehealthcare.com](http://gehealthcare.com)



# Excellence. Day after day.

Optima XR646 HD X-ray system  
powered by Helix™



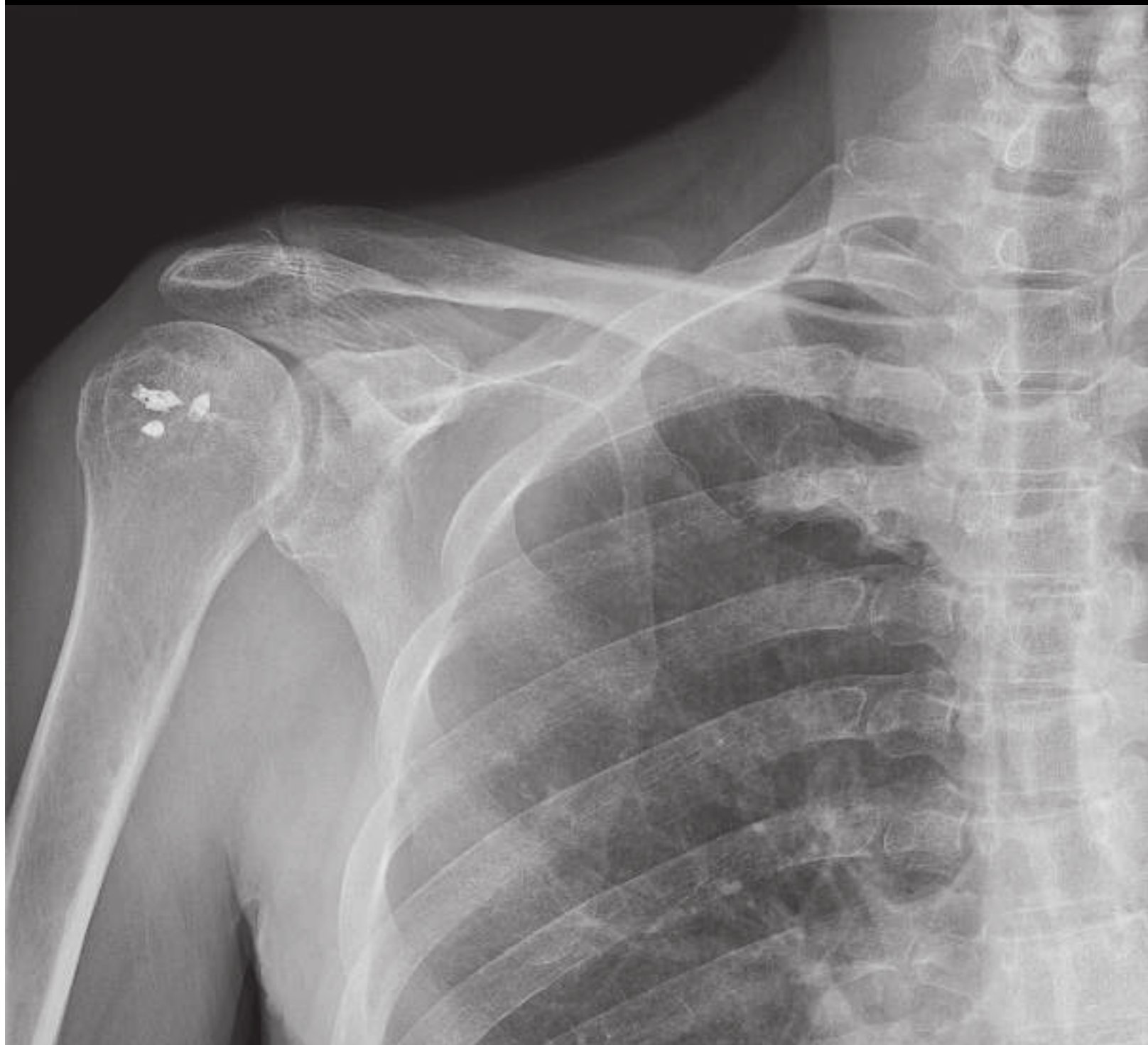




Optima XR646 HD  
powered by Helix™

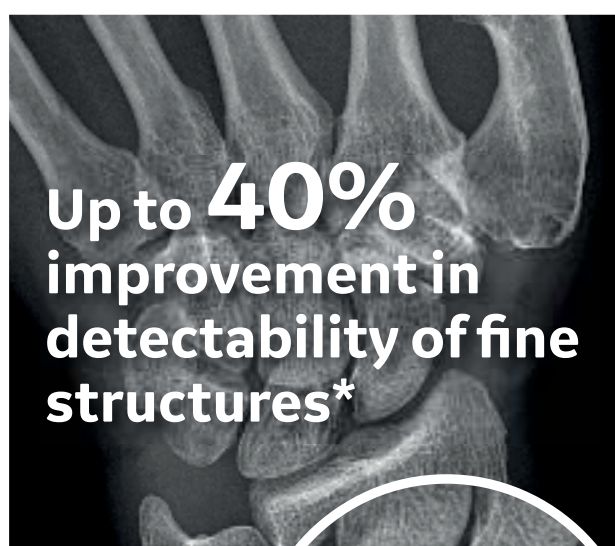
# Optimize your X-ray experience with versatility, speed and precision for all your patients.

Optima XR646 HD is a versatile digital radiographic system that enables diagnostic confidence and workflow efficiency with multiple configurations that adapt to your needs.



# Get the diagnostic clarity you need from that first X-ray

Helix™ Advanced Image Processing delivers sharp detail and consistent performance in X-ray, despite variations in exposure technique and challenging exam conditions.



Up to **40%**  
improvement in  
detectability of fine  
structures\*

\*Source: GE whitepaper:  
High resolution for improved  
visualization (DOC2045904)

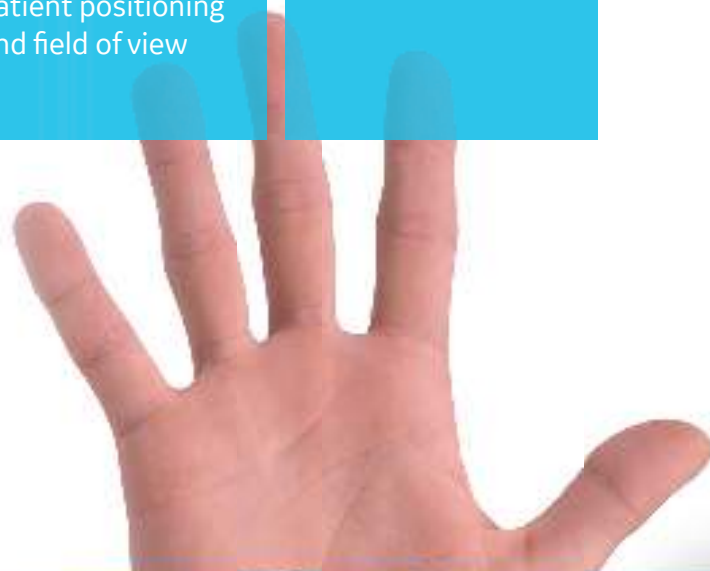


**Extraordinary  
anatomical detail  
at low dose  
in every X-ray  
image**

**Anatomy  
specific image  
enhancement**  
for clear bone  
and soft tissue  
presentation across  
different anatomies

**Consistent  
brightness and  
contrast** across  
variations in dose,  
patient positioning  
and field of view

**Excellent  
handling  
of metal  
implants**



Focus on what matters  
most... **your patient**







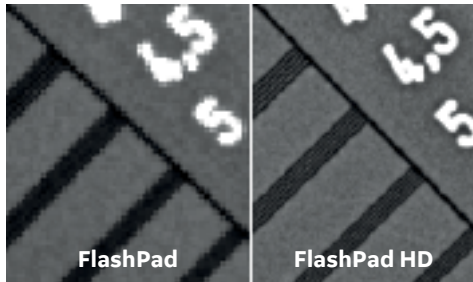
# Don't miss a thing

**Extraordinary anatomical detail  
at low dose in every X-ray image.**

Helix™ advanced image processing algorithms harness the full high-resolution power and exceptional dose efficiency of FlashPad HD detectors to deliver outstanding clarity and extraordinary anatomical detail where it matters most.

## Quadruple your resolution

Resolution test pattern image



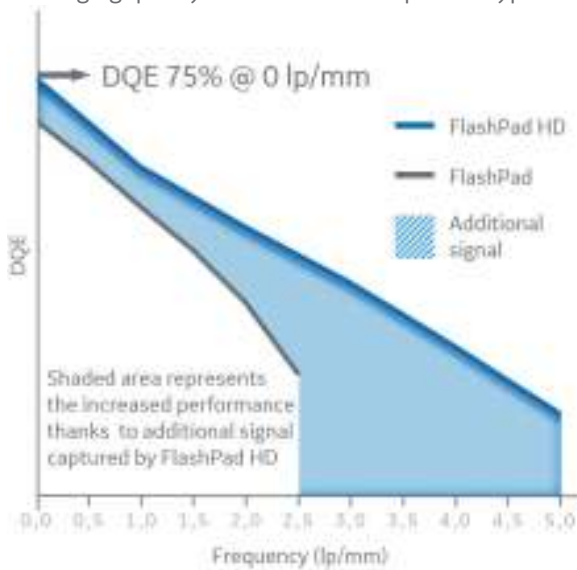
The **FlashPad HD** detectors pack four times more pixels per area for sharp X-ray images, plus they capture extraordinary anatomical detail at low dose. Available in 10 in x 12 in & 14 in x 17 standard cassette sizes.



5 lp/mm resolution  
100 micron pixel pitch

## Exceptional dose efficiency for your tiniest patients (and the large ones too)

The ultra-high dose efficiency helps enhance diagnostic imaging quality at low dose for all patient types.



Acquired at 64 kVp/0.4 mAs.  
Typical DR/CR technique 0-6 mo. AP Chest: 63kVp/1.6mAs\*

\*\*A paediatric X-ray exposure chart"; Stephen P Knight; Journal of Medical Radiation Sciences, 2014



Anatomy specific image enhancement. Clear bone and soft tissue presentation across different anatomies and views.





# Consistent performance and presentation despite challenging exam conditions.

**Without Helix™**



**With Helix™**



Helix™ delivers consistent brightness and contrast across variations in dose exposure with Smart Windowing and enhanced Contrast Restoration

Consistent performance despite variations in collimation and patient positioning with Helix™

Intelligent collimator edge detection with outstanding accuracy in pediatric applications.



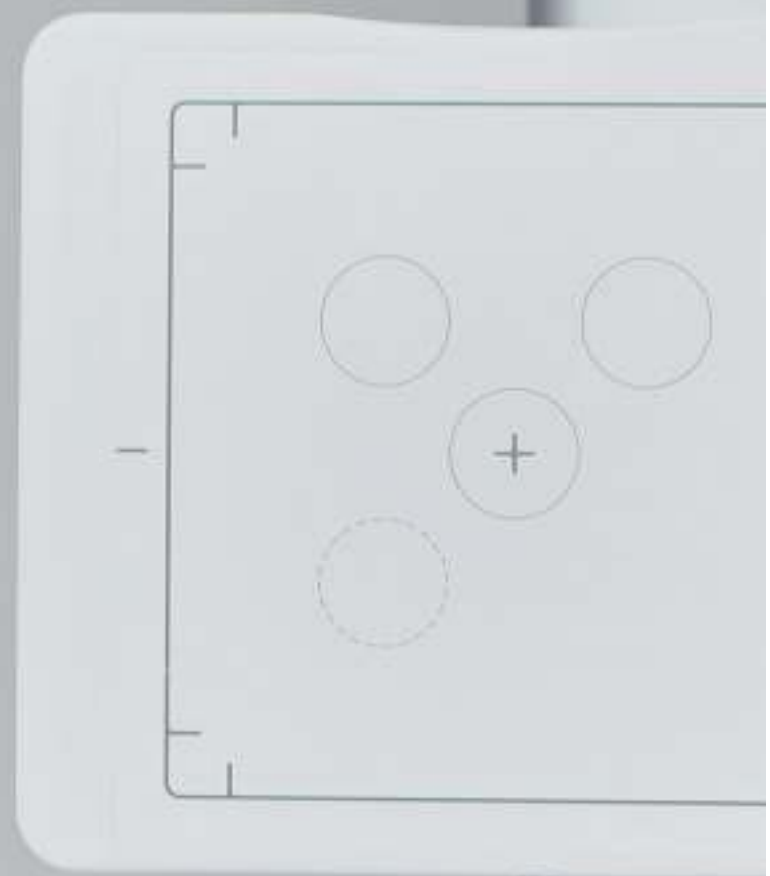




Excellent  
handling  
of metal  
implants.

Clear bone-metal interface  
without halo artifact

We know speed  
and efficiency matter.



Automation  
makes it easier.







# AutoRAD Comprehensive Workflow Automation Suite.

## **Fast and easy X-ray exams, effortless patient positioning**

AutoRAD Suite offers an extensive set of automation and workflow enhancing features, to make exam set up fast, intuitive and easy for X-ray technologists and comfortable for patients.

### **New User Interface**

Redesigned navigation and **Quick Tools** for fewer clicks and intuitive operation.

### **QuickCharge**

Detector charging in the table and wall stand bucky.

### **Auto Field-of-View**

Predefined collimation sizes for each view.

### **Auto Protocol Assist**

Automatic selection of anatomy & technique based on modality work list.





**Versatile configurations**

Adapts to your clinical environment with multiple table, wall stand and ceiling suspension configuration options.

**Auto-tracking**

Maintain SID & tube-detector alignment with table and wall stand receptor automatically.

**QuickShare**

Hassle-free sharing and pairing of multiple wireless detectors.



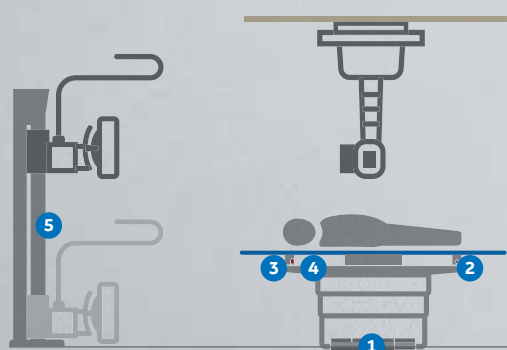
**QuickConnect**

Automatic wifi channel switching to avoid wireless interference.



# Your patient's safety, comfort and dignity in mind.

A bariatric X-ray table capable of supporting up to a 400 kg / 882 lbs\* that lowers to 50cm / 20 inches.



## Extensive Patient Safety Features

1. Double-tap safety foot pedals (table and wall stand)
2. Safety switches to disable motion during patient transfer
3. Two emergency stop buttons
4. Anti-collision and anti-pinch sensors on table, wall stand and ceiling suspension.
5. Electromagnetic brakes securing vertical motion of wall stand

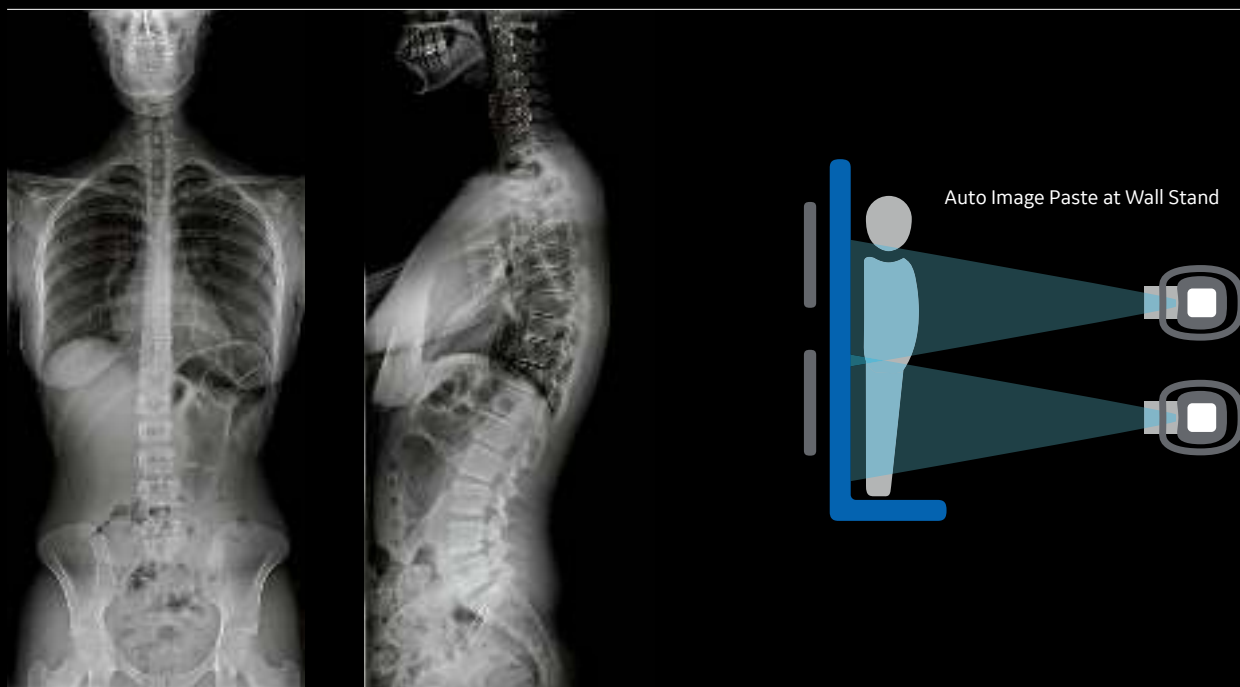


\*Table weight limit: 400kg/882 lb static and 320kg/705 lb dynamic (elevating).  
A standard table configuration with a weight limit of 250 kgs (551 lbs) is also available on Optima XR646 HD





# Auto Image Paste Seamless long bone and spine imaging at the wall stand and table.



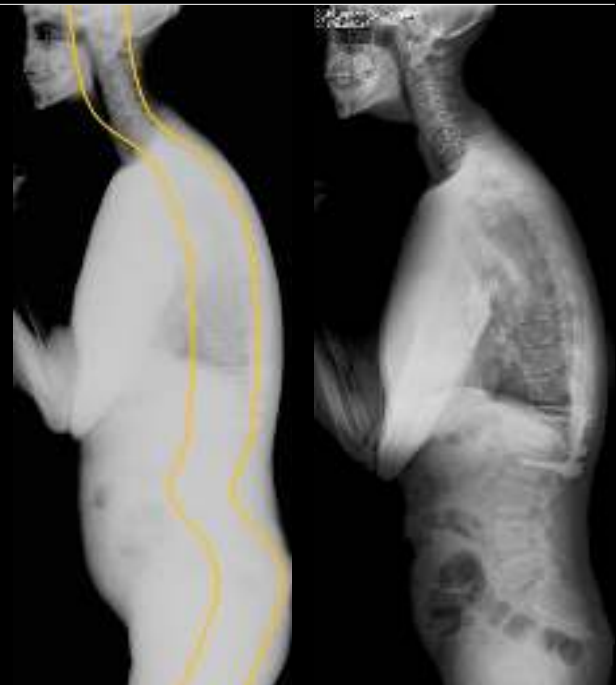
**One fast, precise and highly automated exam.**

**Auto Image Paste** has been **enhanced with AutoSpine**, an intelligent pasting algorithm that follows the contour of the spine for vertical equalization enabling a natural balance of brightness & contrast along the patient body.

**Without AutoSpine**



**With AutoSpine**







# Data isn't just about looking backwards. It helps you plan the future.

## X-ray Quality Application featuring Repeat Reject Analytics

**Zero in on root causes of rejects, enhance training, drive efficiency and help reduce dose.**

Optima XR646 HD is compatible with GE's X-ray Quality Application featuring Repeat Reject Analytics.

Connect automatically to compatible X-ray systems, and use web-based dashboards to manage quality assurance. Uncover the root cause of rejected X-ray exams, plan targeted training and help reduce unnecessary radiation dose.

## iCenter asset management software platform

**Optimize utilization of your X-ray equipment. Balance workload using the full power of healthcare data analytics.**

**iCenter** empowers you with data and analytics for valuable insights into the utilization and workload of your X-ray assets, to help when making strategic decisions concerning workflow optimization.



## X-ray service and support

**Our X-ray systems, applications and support never rest, so you can focus on your patients.**

GE X-ray machines are fully supported by expert field engineers you know and trust. Our Advanced Service Technologies\* help you maximize uptime and ensure your X-ray system is ready when you are.

## Insite™ remote connectivity

Remote diagnostics and troubleshooting for fast resolutions, often without a field engineer visit.

Remote applications assistance with engineer connecting online in real time.


Proactive monitoring, helping detect issues so they can be resolved before downtime occurs.

## Education

**Get the education you and your team need to stay sharp.**

GE Healthcare offers product and clinical education to help you and your team stay sharp. From intensive technical and clinical product training to our extensive continuing education opportunities for technologists and radiologists, we can help you meet your training needs, online and onsite

\* Service and education offers may vary by country, check with your local representative



Ready  
whenever  
you are.



