



LOGIQ S7 XDclear 2.0

Amazing Versatility

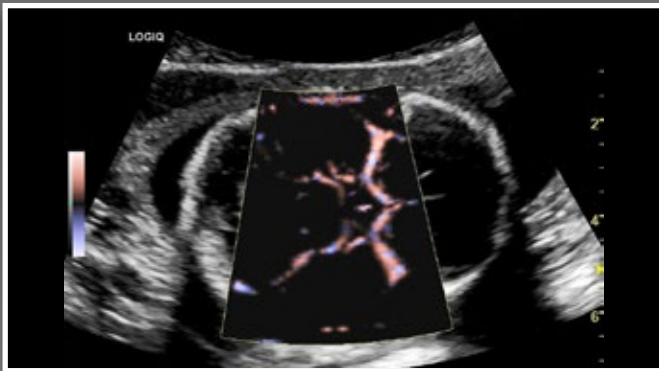


XDclear family

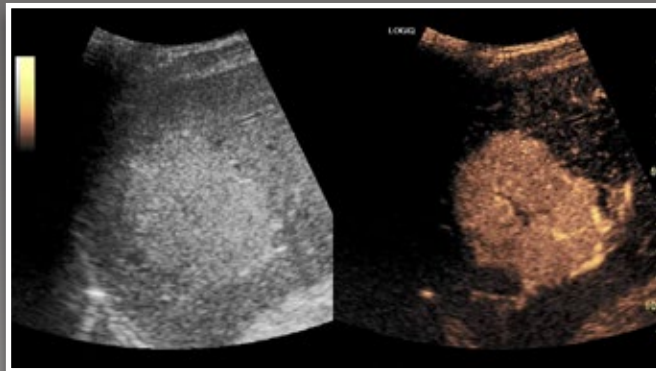
LOGIQ™ S7 XDclear™ 2.0

SENSATIONAL PERFORMANCE

From the start, the LOGIQ S7 has been designed for the needs of shared service environments. Now, its versatility is further enhanced with the next-generation of XDclear technology and a new design taking performance to the next level. New probes and features expand now its usage in multiple applications, addressing different users with high quality images, ease of use, and specialized capabilities. From its versatility to its budget-friendly price, the LOGIQ S7 XDclear 2.0 is designed for practises with high expectations for both performance and value.



Fetal Circle of Willis flow using B-Flow HD Color



CEUS - Liver imaging



MSK imaging

S-Agile Acoustic Architecture

Built on proprietary clinical models of the human body, S-Agile Architecture dynamically optimizes image acquisition for virtually every body type with minimal keystrokes.

NEW - XDclear Clarity and Versatility

Harnessing S-Agile Acoustic Architecture and XDclear technology, the system enables superb images across a wide range of applications, including abdominal, musculoskeletal, small parts, breast, vascular, OB/GYN, cardiology, pediatrics and urology. A wide range of E-Series and XDclear probes, which are GE's highest performing probes, are available along with specialty probes.

High-Definition Widescreen Monitor

Advanced LCD technology in our wide-screen monitor provides high contrast and deep blacks, extraordinarily vibrant colors, and excellent image quality.

NEW - Enhanced B-Flow Imaging with B-Flow HD Color

Enhanced B-Flow Imaging with B-Flow HD Color provides enhanced sensitivity to small vessels and slow flow states, and enables side-by-side display of B-Mode and B-Flow images.

- + Superb multi-purpose imaging across a wide range of applications, including abdominal, cardiac, OB/GYN, vascular and musculoskeletal
- + Enhanced B-Flow™ Imaging – a GE exclusive – with exquisite sensitivity to small vessels
- + Greater portability and a smaller footprint¹ and enhanced Power Assistant option to scan via battery alone for up to one hour
- + On-board training module to help shorten the operational learning curve



SMART DESIGN

This portable system easily maneuvers in tight spaces, making it well-suited for crowded rooms. Practical productivity enhancers – from the intuitive keyboard and large touchscreen to built-in automation tools – help reduce the workflow burden on busy staff.



Automated Measurement and Optimization Tools

Streamline exams with user-guided automatic measurements and image optimization tools.

Productivity Packages

Label, measure, and describe anatomy quickly and confidently, plus generate DICOM® SR compatible summaries.

Power Assistant with option for mobile scanning

Scan for up to one hour on battery alone with the new extended battery options.

Scan Assistant

Customizable automation helps reduce keystrokes and exam times. One study demonstrated a 79% reduction in keystrokes and 54% reduction in exam time versus not using Scan Assistant.²

Compare Assistant

Easily view a prior ultrasound, mammography, CT or MR image and current images together in real time via a split screen on the monitor.

High-Res widescreen display

High contrast, configurable 23" LCD monitor with LED backlit display mounted on an articulating arm allows user to arrange images and data to meet their needs.

Designed for Usability

10.1" size flat screen touch panel supports infection control with ease of cleaning. Smaller footprint eases navigation and patient access for portable studies.

GE Raw Data

Helps shorten exam times by enabling users to quickly acquire data and then apply a wide variety of image processing after the exam.

NEW - Tricefy™

This cloud-based solution enables you to share, collaborate and archive ultrasound images and reports securely with colleagues and patients directly from your imaging device.

NEW - My Trainer

On-board training modules help accelerate operational confidence.



SPECIALIZED CAPABILITIES

The LOGIQ S7 XDclear 2.0 system gives you access to a wide range of sophisticated optional clinical tools.

Contrast Enhanced Imaging (CEUS)

Optimized contrast agent specific waveforms to enhance the clinician's ability to detect and characterize lesions including advanced quantification tools such as time intensity curve and parametric imaging.

NEW - 2D Shear Wave Elastography

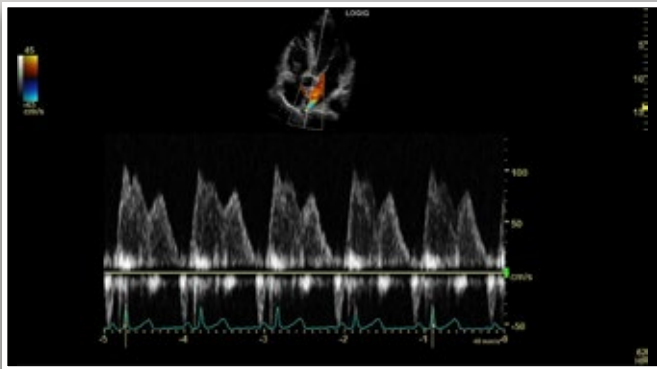
Provides quantitative measures of tissue elasticity and color-coded elastograms to assist clinicians in diagnostic and patient management decisions for both deep and superficial applications.

Fetal assessment tools

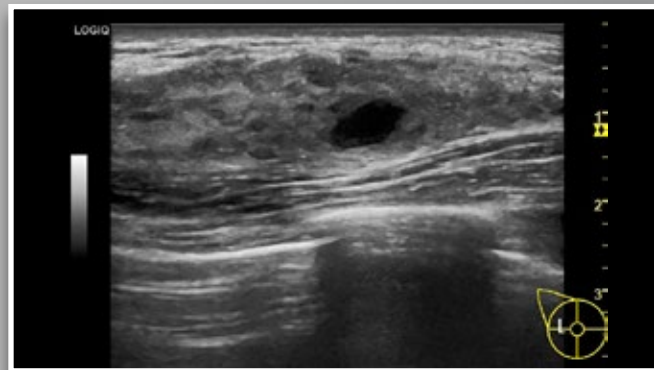
Advanced STIC (Spatio-Temporal Image Correlation) helps provide a high quality, comprehensive fetal echo examination. Advanced Volume Contrast Imaging (VCI) and OmniView helps improve contrast resolution and visualization of rendered anatomy with clarity in any image plane

NEW - HDlive™

Brings unprecedented anatomical realism to surface, vascular, and internal structures of fetal and female anatomy.



Cardiac color flow and Pulse Doppler imaging



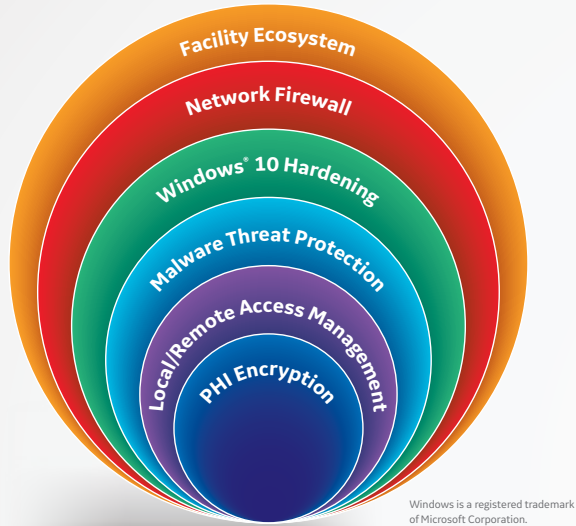
Breast imaging



Liver Shear Wave image

NEW - SonoDefense Security Protection

Depend on SonoDefense, our multi-layer approach to cybersecurity and data privacy protection, to protect your system operation and patient data from cyberthreats and unauthorized access.



Educational Opportunities

Continue your professional development through academic classroom training, online tutorials, and workshops. LOGIQ Club offers easy access to best practices from our global customer base.

Service and Financial Solutions

Count on responsive service and support from GE Healthcare that meet your needs for equipment maintenance and service, probe protection and financing.

¹ As compared to the previous version of LOGIQ S7.

² Internal GE Healthcare study performed by third party consultants. The study was conducted using the LOGIQ E9 ultrasound system. The specific numbers refer to a Lower Extremity Venous study.

Imagination at work

www.gehealthcare.com. Product may not be available in all countries and regions.

Contact a GE Healthcare Representative for more information.

Data subject to change.

© 2020 General Electric Company.

GE, the GE Monogram, imagination at work, LOGIQ, XDclear, HD*live* and B-Flow are trademarks of General Electric Company.

DICOM is a trademark of the National Electrical Manufacturer's Association.

Trice and Tricefy trademarks are registered trademarks of Trice Imaging, Inc.

Reproduction in any form is forbidden without prior written permission from GE. Nothing in this material should be used to diagnose or treat any disease or condition. Readers must consult a healthcare professional.

February 2020 JB76395XEa

