



► *Elevating Your Radiology Practice to the Next Level*

LOGIQ E10 Series

EMPOWERING YOU TO MAKE THE DIFFERENCE

Efficient, next-generation imaging, from neonates to geriatric patients

CLINICAL CHALLENGE

Radiology practices face higher demand and more challenging cases. Clinicians need robust ultrasound tools that enable productive, patient-centered care, across a wide range of clinical scenarios and applications.

GE SOLUTION

Whether the case is routine or technically challenging, the LOGIQ™ E10 Series helps you make a difference in the lives of your patients. The systems feature cSound™ Architecture, which combines versatile XDclear™ probes and the cSound Imageformer to deliver exceptional image quality in head-to-toe clinical scenarios. New AI-based workflow tools help increase exam efficiency.



Confident diagnosis

The LOGIQ E10 Series enables clinicians to acquire extraordinary images across a broad spectrum of patients, with incredible uniformity from near to far field. The system's advanced imaging technology delivers penetration power even in high-BMI patients.

Auto-optimized images: The cSound Imageformer continuously delivers images of incredible uniformity from near to far field. There's no need to adjust the focus – the information you need is there, instantly.

Radiantflow™: Provides a near-3D look to enhance visualization of tiny vessels, especially when combined with Micro Vascular Imaging (MVI).

MVI: High-definition flow mode helps clinicians assess blood flow with ease in the joints, lymph nodes, and other small structures. Further enhanced when used with Radiantflow.

Choice of high-performance probes: E-Series and XDclear probes deliver powerful, high fidelity and wide bandwidth for impressive deep penetration and high resolution.

Comprehensive tools

The LOGIQ E10 Series provides robust tools that give radiologists a new level of confidence in their diagnostic decisions.

B-Flow™ imaging: Enables direct, real-time visualization of blood flow echoes with no vessel wall overlap to obscure details. B-Flow Capture with Reconstruction provides a three-dimensional view of blood vessels, suppressing artifacts and enhancing weak vessel signals.

Contrast Enhanced Imaging (CEUS) with TIC and Parametric Imaging: Optimizes the balance between penetration and resolution for improved contrast sensitivity, enhancing the ability to detect and characterize lesions.

2D Shear Wave Elastography: Two-dimensional shear wave elastography enables quantitative assessment of tissue elasticity. Now available with a Shear Wave Elastography Quality Indicator to support confident measurements. Strain Elastography is also available for qualitative and semi-quantitative tissue assessment.

Ultrasound Guided Attenuation Imaging (UGAP): New tool that quantifies liver steatosis to aid in early identification and monitoring of patients with NAFLD, NASH or ASH.

Volume Navigation: The combination of 2D/3D GPS Tracking and Fusion Imaging can make a real difference in accuracy, potentially reducing procedure time and patient stress.

- **Fusion Imaging:** Merge real-time ultrasound with a volume DICOM® CT, MR or PET CT dataset to facilitate second-look examinations and biopsy guidance
- **2D/3D GPS Tracking:** Visually track position during a scan using GPS-like technology, and mark points of interest to save time and enhance confidence

Photo Assistant app: Acquire photos of relevant anatomy via an Android™ smartphone or tablet, and transmit them wirelessly to the ultrasound system for inclusion with the clinical images – providing valuable context for the reviewing physician.



Concise workflow

The LOGIQ E10 Series has been designed to help radiology departments achieve new levels of efficiency to free up time for heavy workloads and challenging cases.

Raw Data: Expanded capabilities enable image processing and quantification to be applied after the exam.

Auto Doppler Assistant: This AI-based tool automatically adjusts color box and angle, resulting in 20% time savings and 50% fewer keystrokes for the user.

Start Assistant: Automatically launches the preferred setting when the user selects an exam description, reducing keystrokes and helping to ensure quality imaging.

Scan Assistant: Provides customizable automation to assist users at each step of an ultrasound exam, helping to reduce keystrokes and exam times.

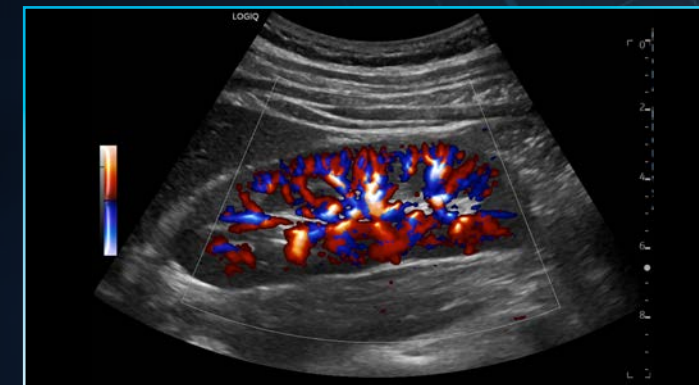
Compare Assistant: View a prior study – ultrasound, mammography, CT or MR – and current images together in real time via a split screen on the monitor.

Productivity and auto measurement packages: Semi-Quantitative Flow Analysis, Breast, Thyroid and OB help standardize exam quality while saving time.

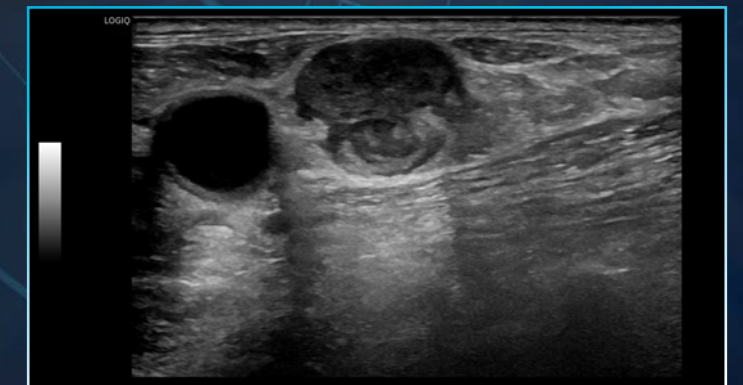
Productive operation: The ergonomic user interface has easy-to-reach controls, an adjustable floating keyboard, and an articulating monitor that adjusts for viewing both on- and off-axis.

Exceptional mobility: Systems easily fit into crowded suites. Power Assistant battery eliminates the need for re-boot, and you can even scan on battery power. On-board storage bins ensure supplies are at hand.

Streamlined archiving and reporting: Robust DICOM connectivity allows images to be saved to a central location and reviewed alongside other imaging modalities.



Radiantflow Color imaging of kidney, C1-6-D



Neck lymph node image using ML6-15-D



> Smart investment

GE Healthcare accelerates innovation with the LOGIQ E10 Series – making it the smart choice for now and in the future. The systems are available with a full suite of robust features and scalable options.

A to A digital platform: From awareness to assistance, stay at the forefront of clinical imaging with our A to A digital platform, specifically engineered so you can add next-generation capabilities in the years ahead.

Scalable to a whole-body solution: Provides a full suite of robust, standard features and scalable options so you can configure the optimal system to meet your abdominal, cardiac, OB/GYN, vascular, breast, and musculoskeletal imaging needs.

Familiar user interface: The new LOGIQ E10 Series offers greater functionality while maintaining the ease of operation and satisfying user experience that has become a hallmark of LOGIQ interface design.

SonoDefense: GE Healthcare's multi-layer approach to cybersecurity helps keep the systems safe and functional in the face of cyberthreats and helps protect patient data from unauthorized access.

Digital support: Wide choice of efficiency tools to help users, administrators, and operations staff improve productivity, including remote preset management, performance analytics, software/security updates, live clinical training, and advanced system diagnostics.

Imagination at work

Product may not be available in all countries and regions. Full product technical specifications are available upon request. Contact a GE Healthcare Representative for more information. Please visit www.gehealthcare.com/promotional-locations.

Data subject to change.

© 2020 General Electric Company – All rights reserved.

GE, the GE Monogram, imagination at work, LOGIQ, XDclear, cSound, B-Flow, and Radiantflow are trademarks of General Electric Company. Android is a trademark of Google LLC. DICOM is a trademark of National Electrical Manufacturers Association.

Reproduction in any form is forbidden without prior written permission from GE. Nothing in this material should be used to diagnose or treat any disease or condition. Readers must consult a healthcare professional.

To determine whether individual features are standard or optional, consult with your GE Healthcare sales representative.

Not available for use in the USA.

February 2020 JB74150XX



Powered By
Edison