



▶ *Enabling Pediatric Imaging*



LOGIQ E10 Series

EMPOWERING YOU TO MAKE THE DIFFERENCE

Fast, accurate exams, from neonates to young adults

CLINICAL CHALLENGE

In pediatric ultrasound, the diversity of the caseload can be challenging. Clinicians need a non-ionizing radiation technology that can image a wide range of patients, from newborns to young adults, and acquire detailed information accurately and efficiently.

GE SOLUTION

The LOGIQ™ E10 Series enables you to make a difference in the lives of your youngest patients. Central to the new system is the cSound™ Architecture that combines versatile XDclear™ probes and the new cSound Imageformer to deliver exceptional image quality, even with high-risk neonate cases. New AI-based workflow tools help increase exam efficiency.



Confident diagnosis

The extraordinary image quality of the LOGIQ E10 Series enables clinicians to diagnose a wide range of patients and conditions, from neonate cranial scans to abdominal or pelvic pain in children and teenagers.

Auto-optimized images: The cSound Imageformer continuously delivers images of incredible uniformity from near to far field. There's no need to adjust the focus – the information you need is there, instantly.

Radiantflow™: Provides a near-3D look to enhance visualization of tiny vessels, especially when combined with Micro Vascular Imaging (MVI).

MVI: High-definition flow mode helps clinicians assess blood flow in children's smaller vessels. Further enhanced when used with Radiantflow.

Choice of high-performance probes: E-Series and XDclear probes, including specialty probes designed for pediatrics, deliver powerful, high fidelity and wide bandwidth for impressive deep penetration and high resolution. Embedded Volume Navigation sensors in select probes simplify workflow and enhance productivity.

Comprehensive tools

The LOGIQ E10 Series provides robust tools to facilitate accurate diagnostic and treatment decisions.

B-Flow™ imaging: This non-Doppler technique enables direct, real-time visualization of blood flow echoes with no vessel wall overlap to obscure details. Useful to evaluate perfusion and small vessel structures.

B Steer +: Enhances needle visualization in real time to improve speed and confidence when doing needle procedures on pediatric patients.

Volume Navigation: The LOGIQ E10 Series offers advanced capabilities for image-guided procedures, including:

- **Fusion Imaging:** Merge real-time ultrasound with a volume DICOM® dataset (CT, MR, PET/CT, CBCT, SPECT and 3D CEUS) to help increase precision in image-guided procedures
- **Needle Tip Tracking:** Helps users navigate interventional procedures in plane or out of plane. Available Virtual Tracking tool displays a projected view of the needle during procedures
- **2D/3D GPS Tracking:** Visually track position during a scan using GPS-like technology, and mark selected points of interest to save time and enhance confidence

Contrast Enhanced Imaging (CEUS): Optimizes the balance between penetration and resolution for improved contrast sensitivity, enhancing the ability to detect and characterize focal liver lesions. In addition, CEUS enhances sensitivity when evaluating for urinary reflux.

2D Shear Wave Elastography: Enables non-invasive 2D quantitative assessment of tissue stiffness and can be of particular value in evaluating liver diseases. Strain elastography is also available for qualitative tissue assessment.



Neonatal abdomen, L2-9-D

Concise workflow

The LOGIQ E10 Series can help you achieve new levels of workflow efficiency, so you have more time to focus on patients.

LOGIQ View: Enables a “virtual sweep” that can help reduce exam times when a panoramic view is needed, as in neonate spine studies. B-Mode measurement provides added diagnostic confidence.

Virtual Convex: Provides a wide field of view so users can visualize more anatomy in a single scan.

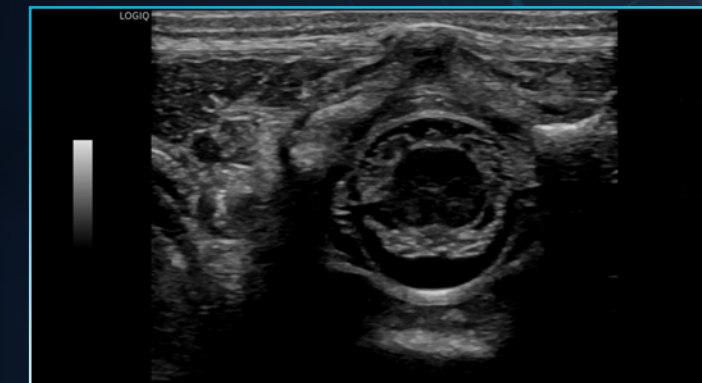
Raw Data: Expanded capabilities enable users to apply a wide variety of image processing and quantification after the exam. This allows the operator to extract and reanalyze information without extending exam time.

Scan Assistant: Provides customizable automation to assist users at each step of an ultrasound exam, helping to reduce keystrokes and exam times.

Compare Assistant: Easily view a prior study – ultrasound, CT or MR – and current images side-by-side in real time on the monitor to help improve the quality and efficiency of comparison studies, which constitute a high percentage of pediatric ultrasound exams.

Start Assistant: Automatically launches the preferred setting when the user selects an exam type, reducing keystrokes and helping to ensure quality imaging.

Exceptional mobility: Systems easily fit into crowded suites. Power Assistant battery eliminates the need for re-boot, and you can even scan on battery power. On-board storage ensures supplies are at hand.



Neonatal spine, L8-18i-D



MVI plus Radiantflow imaging of neonatal brain, L2-9-D



> Smart investment

GE Healthcare accelerates innovation with the LOGIQ E10 Series – making it the smart choice for now and in the future. The systems are available with a full suite of robust features and scalable options.

A to A digital platform: Stay at the forefront of clinical imaging with our A to A digital platform, specifically engineered so you can add next-generation capabilities in the years ahead.

Familiar user interface: The new LOGIQ E10 Series offers greater functionality while maintaining the ease of operation and satisfying user experience that has become a hallmark of LOGIQ interface design.

SonoDefense: GE Healthcare's multi-layer approach to cybersecurity helps keep the systems safe and functional in the face of cyberthreats and helps protect patient data from unauthorized access.

Digital support: Wide choice of efficiency tools to help users, administrators, and operations staff improve productivity, including remote preset management, performance analytics, software/security updates, live clinical training, and advanced system diagnostics.



Imagination at work

Product may not be available in all countries and regions. Full product technical specifications are available upon request. Contact a GE Healthcare Representative for more information. Please visit www.gehealthcare.com/promotional-locations.

Data subject to change.

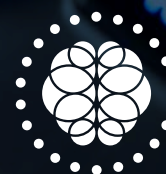
© 2020 General Electric Company – All rights reserved.

GE, the GE Monogram, imagination at work, LOGIQ, XDclear, cSound, B-Flow, and Radiantflow are trademarks of General Electric Company. DICOM is a trademark of National Electrical Manufacturers Association.

Reproduction in any form is forbidden without prior written permission from GE. Nothing in this material should be used to diagnose or treat any disease or condition. Readers must consult a healthcare professional.

To determine whether individual features are standard or optional, consult with your GE Healthcare sales representative.

February 2020 JB74151XX



Powered By
Edison